



NeuroLF[®]

Dedicated Brain PET System

- > Ultra-compact
- > Easy to use
- > High Patient Comfort
- > Affordable





NeuroLF[®] System A new generation of brain imaging excellence

The detector ring is the heart of NeuroLF and allows with an axial field of view of 16.3 cm to scan entire brain.

The seat offers a comfortable position and thanks to various stabilization aids the patient movement can be reduced.

NeuroLF is based on a **customer-centric design** which makes it very user friendly and intuitive to use.

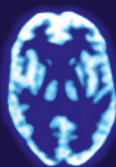
The scanning unit can be detached from the seat and allows for a fast and smooth installation.

IMAGING EVERYONE

- Hoffman phantom acquired with NeuroLF system
- Acquisition: activity 37.9MBq, 20 minutes acquisition time
- Reconstruction: random, attenuation and scatter correction; 3 × 3 × 3 median filter, reconstruction time less than 15 minutes



sagittal



transverse



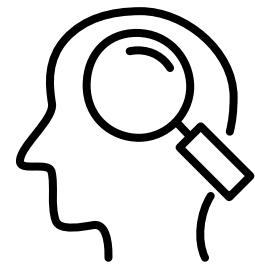
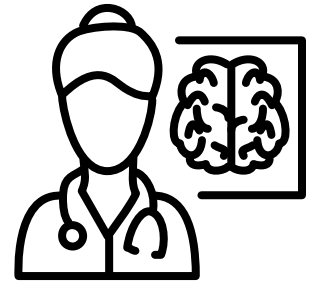
coronal

Scan QR-Code to watch NeuroLF video

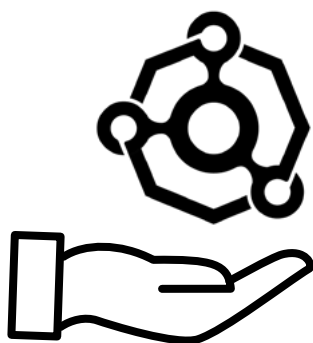


The Opportunity

- > High versatility, **NeuroLF** can be used with various tracers
- > For research and clinical routine
- > Allows for optimal patient flow
- > High cost-effectiveness, attractive ROI



- > Alzheimer's Disease
- > Neuro-Oncology
- > Epilepsy
- > Movement Disorders



Why NeuroLF?

- > First commercially available system of its kind in the US and the European Union with FDA and CE mark
- > State-of-the Art performance
- > Customer-centric design guarantees high comfort and ease of use
- > Simple and fast installation process without major room construction
- > Low power consumption reduces the environmental impact



POSITRIGO

IMAGING EVERYONE

CONTACT

✉ Positrigo AG (Headquarter)
Technoparkstrasse 1
8005 Zurich
Switzerland

☎ +41 44 51 55 330

💻 info@positrigo.com

✉ Positrigo Inc (US Subsidiary)
PO Box
Manchester, VT
USA

☎ (800) 590 - 6984

💻 usa@positrigo.com

